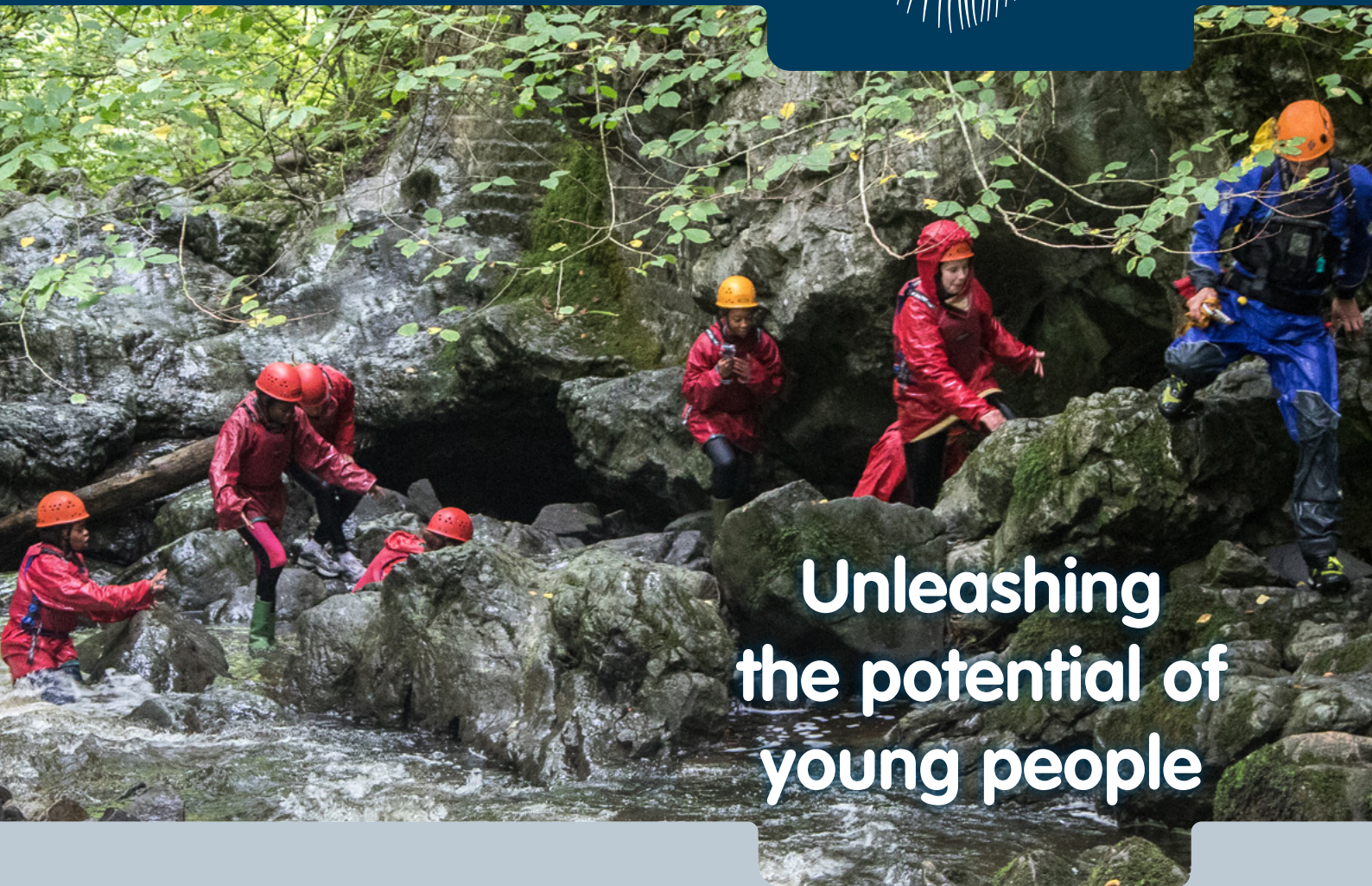


ALTERNATIVE PROVISION WITH
VISION • IDENTITY • PURPOSE



Unleashing
the potential of
young people



LifeLine
Projects

A VISION FOR YOUNG PEOPLE



LifeLine has been working with young people since its inception 17 years ago. By walking the difficult, and occasionally traumatic, path alongside young people, and investing personally in their lives and championing them, we've seen them undertake the most amazing transformations. Through our programmes, we have seen young people improve their attendance by as much as 350%, as well as gain a vision that acts as a catalyst for behaviour change and helps to secure positive post-16 progressions. We have been able to engage parents who had almost given up hope and work in close partnership with local schools to ensure that these students succeed.

Funded programmes don't usually support the long-term relational approach that LifeLine has found to be effective. What they usually want is instant results. But we endeavour to cultivate relationships that facilitate that long-term relationship: where listening, consistency and partnership are key in creating vision and developing the kind of young people that our country needs for the future. Young people who will turn from knife crime and anti-social behaviour to become contributors to society and our next leaders.

It's possible. But but more than that, it's necessary, for we must close the gap and create a fairer society.

A handwritten signature in white ink, appearing to read 'Nathan Singleton', written in a cursive style.

NATHAN SINGLETON
DIRECTOR OF YOUNG PEOPLE'S SERVICES

ALTERNATIVE PROVISION

THE FUTURE



Schools are having to respond to population growth, but how can we ensure that no-one slips through the net? That every pupil, from the brightest star to the under-achiever who struggles to engage, receives the best quality of education?

Our aspiration is that all the young people grow into responsible adults, who are able to provide for themselves and their family, and have a desire to make a positive contribution to society.

The need for alternative provision (AP) is growing. The quality of AP needs to develop, and appropriate funding needs to be assigned to enable this, to ensure young people are meaningfully engaged in education, employment and society.

Alternative provision is key for some students. Often labelled 'trouble-makers', or the ones who pull the school results down, it is these pupils that need a consistent message of vision for their future, delivered by a trusted adult who is willing to listen and show them how to develop resilience to life's knocks. Clear behavioural boundaries which carry consequences if crossed, attendance and a framework of excellent education are all crucial elements which we believe should be quality-tested in their own right in order to maintain a consistent quality across all AP schools.

INCUBATING A NEW WAY A RELATIONAL APPROACH

VIP MENTORING

LifeLine's methodology is relational, rather than structural. We still use structure to ensure efficiency, but we're interested in the whole person.

The whole of a young person's life matters – not just their academic progress. The award-winning **VIP** mentoring programme works to develop a young person's **vision**, **identity** and **purpose**.



VISION

Many young people benefit from the support of a trusted mentor in order to develop a vision for their future. The mentor is often able to identify a student's potential and initially have higher aspirations for them than the student themselves. Our mentors support and encourage students to expand their horizons.

IDENTITY

Students develop a secure identity by developing positive friendships and discovering their strengths. This promotes self-confidence.

Once a young person feels secure in their own skin, we find they can then start to challenge their public identity.

PURPOSE

Once a student has a positive vision and is secure in their identity, it is important that they have a focused purpose for their life. We have found that responsibility develops belonging and ownership. This tends to unlock a great and untapped resource that benefits not only the young person themselves, but also the wider community.

INCUBATING A NEW WAY ONE SIZE DOESN'T FIT ALL

SWITCH EXPEDITIONS



So often the thing that matters most in life is our values. These can affect whether we work well in a team, how we relate to other people, and whether we're able to deal with difficult situations. And key to all this is character. It's our character that determines how we choose to deal with situations, based on our values. There are few situations in life where we don't have a choice how to react. We always have a choice between the right and the wrong thing. Many young people who struggle to engage with mainstream school do so because they make wrong choices and don't know how to deal with the situations they find themselves in, whether it's at school or at home.

Sometimes, a radically different approach to education is required for these young people. **SWITCH Expeditions** is a programme that was incubated for that very reason.

Students learn on the job as they plan their own expeditions. It's not classroom-based in the traditional sense, but it is staffed by skilled teachers who make sure students gain qualifications in the core subjects, while accomplished youth workers coach students in the vital characteristics such as team work, respect, and self-control.

YOUNG
PEOPLE
POWERED



INCUBATING A NEW WAY CREATING CHANCES FOR ALL



Not every student who attends an alternative provision is there because they are disengaged. For some, a disrupted educational background, which could be due to illness or migration, can cause them to fall behind their peers.

For these students, the **LifeLine School** is a unique provision that allows them to catch up via an intense period of up to nine months focused study during year 11. We've taken an 'elite school' approach for these young people. Class sizes are no bigger than 15, while one-to-one pastoral support and small group tutoring mean that, year after year, **100%** of our students leave to pursue a career in their chosen fields.

Many of our students leave us and continue on to Level 3 or A-Level programmes of study. A number have gained places at world-renowned universities and are now in the fields of medicine and engineering.



THE PROOF

LISTENING, CONSISTENCY AND PARTNERSHIP WORK

We've discovered that since [our son] started at LifeLine his confidence and attitude have developed more. He's more outgoing in himself. He has matured as a person.

— Parent

She's a role model to the rest of us, she just gets on with her work.

— Student

I no longer dread getting a phone call from school – we used to get one nearly every day because my daughter kicked off.

— Parent

The LifeLine VIP programme saves me 5 to 10 hours a week.

— Head of Year

Tony was causing trouble at school. He could not relate to other students, would often blow up in class, and beat up younger students if he didn't like the way they looked at him. When he was agitated, he became a health and safety risk – unable to cope with authority and a law unto himself. His headteacher gave him one last chance before the threat of a Pupil Referral Unit became reality. Tony was selected as one of the candidates on SW!TCH Expeditions, a programme designed to turn students from persistent trouble-makers into consistent successes.

After just four weeks Tony was polite to his teachers, gained the respect and attention of his peers and was studying hard.

In the last 5 years...

1750

young people mentored

50+

secondary schools

95%

of students said mentoring is helpful

86%

of students said their grades had improved

75%

of teachers strongly agreed that students made significant improvement

I am delighted to witness the impact that LifeLine has had and the success of those who work with young people who have not found school fulfilling or successful. It is great to see mentoring work that aims to support young people at their point of need.

— Dr Tim Coulson,
Regional Schools Commissioner for East of England and North-East London

YOUNG PEOPLE ARE AGENTS OF CHANGE!

Contact us to help you discover how

nathansingleton@lifelineprojects.co.uk

020 8597 2900 • www.lifelineprojects.co.uk

Winner of...

Children & Young People Now Learning Award 2013

Big Society Award 2012

Children & Young People Now Young Person's Achievement Award 2011

Philip Lawrence Awards 2011